

BIOAKTIV[®] for plants

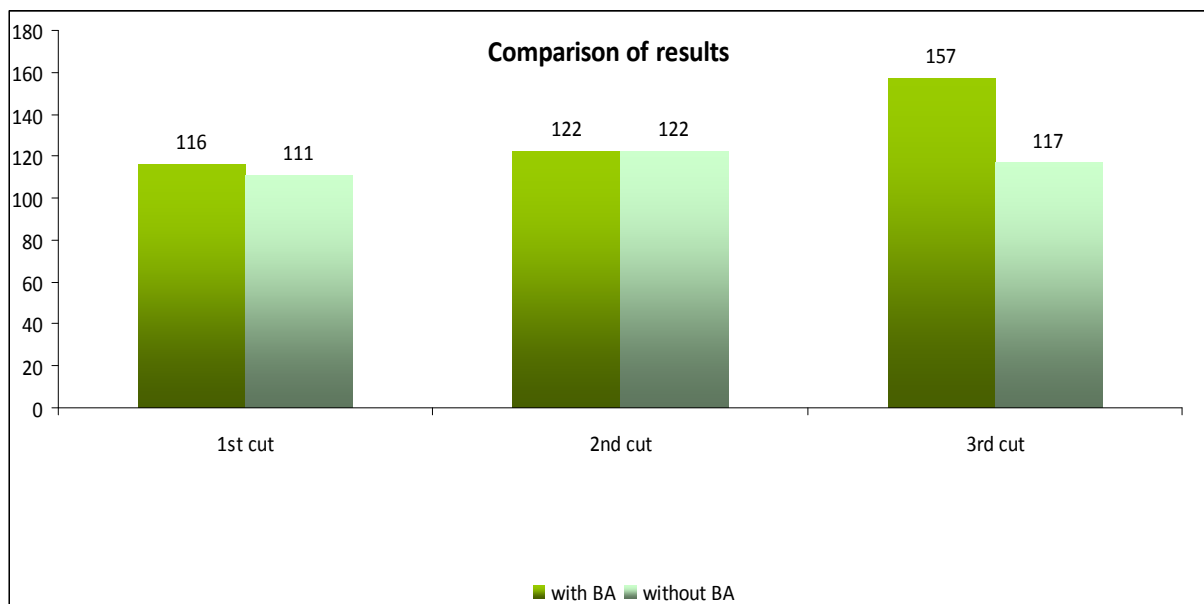
**Results from tests with grass - ryegrass –
the state of Rio Grande do Sul - Brazil**

Farm for cattle grazing

Owner : Ilco Dávila – Fazenda Vila Nova - RS

Summary of results

Indicator	Average of 4 measurements	
	with BioAktiv	without BioAktiv
1° cut 22/08/2013	116g(m.s)/m ²	111g(m.s)/m ²
2° cut 19/09/2013	122g(m.s)/m ²	122g(m.s)/m ²
3° cut 19/10/2013	157g(m.s)/m ²	117g(m.s)/m ²

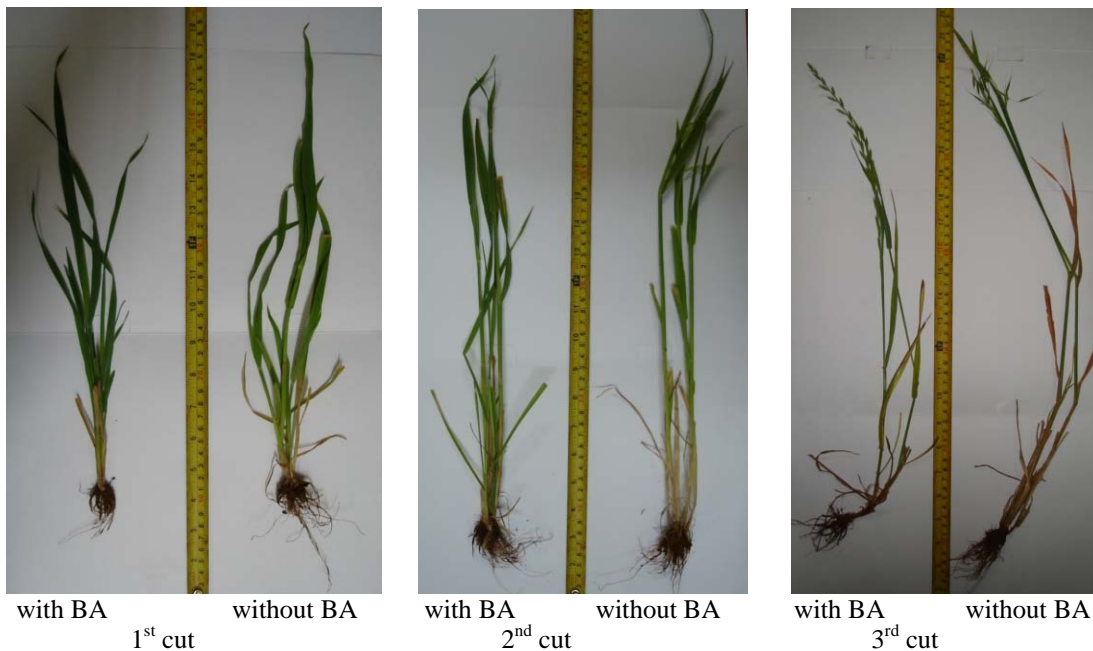


➤ Note: We can see a gradual increase in the performance of grassland that was treated with **BIOAKTIV[®]**



Pasture least developed near forest and further developed on the opposite right side

Comparative pictures ryegrass



Aspects observed:

- Realize positive differences in the size of the roots in the area treated with **BIOAKTIV**[®] in relation to the others. The root system, in general, is longer and plants that have received the product have more branches.
- In the last third was realized the greatest differences in pasture productivity on the **BIOAKTIV**[®] treated area. The difference in color (dark green) and root size was significant.